



ROMAN  

---

GRANIT

**2025**  
CATALOG

**DESIGNMOOD**

# ROMAN --- GRANIT



2025



A perfect **look**  
in a perfect **body**.

# ROMAN GRANIT

## ALL THE **EXCELLENCE** OF THE BEST **PORCELAIN TILES.**

A premium collection, bringing prestigious settings to life while redefining trends for modern living. There are many reasons for architects, interior designers, and final consumers to choose RomanGranit for their residential and commercial spaces: from the superior quality and reliability of the line, to the creative solutions it offers to both interior and exterior environments.

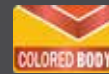
## **SUPERIOR** FEATURES FOR **UNIQUE SURFACES.**

A selection of rectified glazed porcelain tiles made only with the best raw materials. Elegant, trendy, classic, or contemporary. Our collections provide colors and sizes to create the perfect aesthetic combinations. There are many reasons to choose RomanGranit: superior quality, reliability, and creative solutions offered.



### **GLOSS ON MATT**

This beautiful RomanGranit surface combines glossy and satin finishes to achieve unparalleled brilliance.



### **COLORED BODY**

RomanGranit products are available in colored or white body alternatives, providing a wide range of solutions for any space.



## THE REAL GLAZED PORCELAIN TILES

Manufactured according to the highest standards of quality, using local white clay exposed to high pressure and temperatures exceeding 1200°C, Roman Granit is a Category B1A, certified ISO13006, product. Thanks to non-existing levels of water absorption, certified below 0,5%, real glazed porcelain tile are sure preserve their everlasting beauty.



## DIGITAL TECNICA

An extraordinary technology that perfectly reproduces the actual effect of natural surfaces. Wood, marble and stone have never felt so real.



## RECTIFIED EDGE

RomanGranit's products are all rectified: sizes are exact and tiles can be installed with minimum joints.

# THE RELIABILITY OF A SOLID COMPANY.

Roman is the leader of ceramic brands in Indonesia. As a brand of 40 years in business, Roman offers high-value products to meet the needs of architects and interior designers: Roman ceramics tiles, suitable for everyday living spaces, and RomanGranit, a selection of refined glazed porcelain tiles.



**DESIGNMOOD**

CONTEMPORARY SHAPES.



SIZE: **60X60**

SURFACE: **MATT**

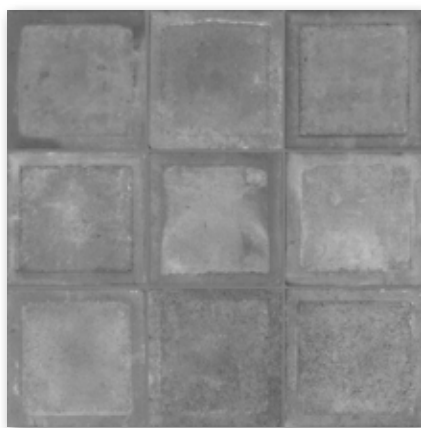
SLIP RESISTANCE: **R11**



dGrid Pearl

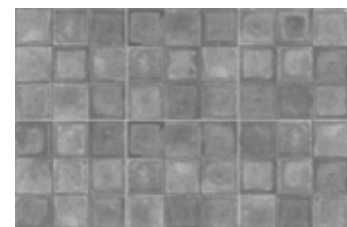


GT603400R  
dGrid Pearl



GT603401R  
dGrid Grey

 V2



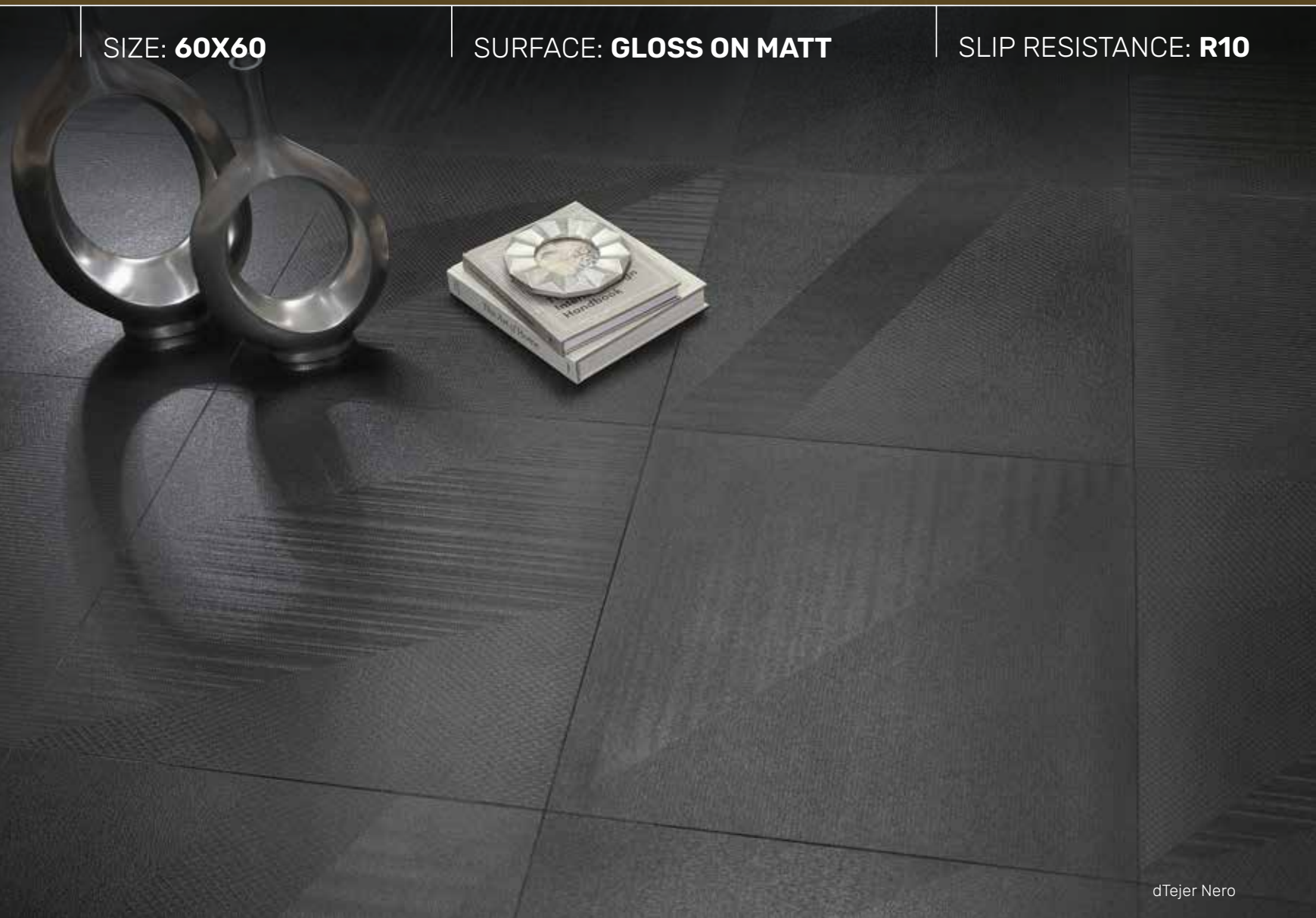
Mild random design (8)



SIZE: **60X60**

SURFACE: **GLOSS ON MATT**

SLIP RESISTANCE: **R10**

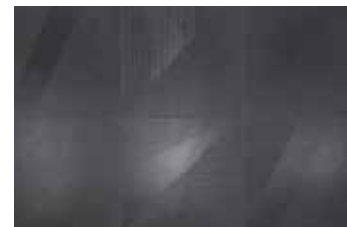


dTejer Nero



GT602747R  
dTejer Nero

 V3



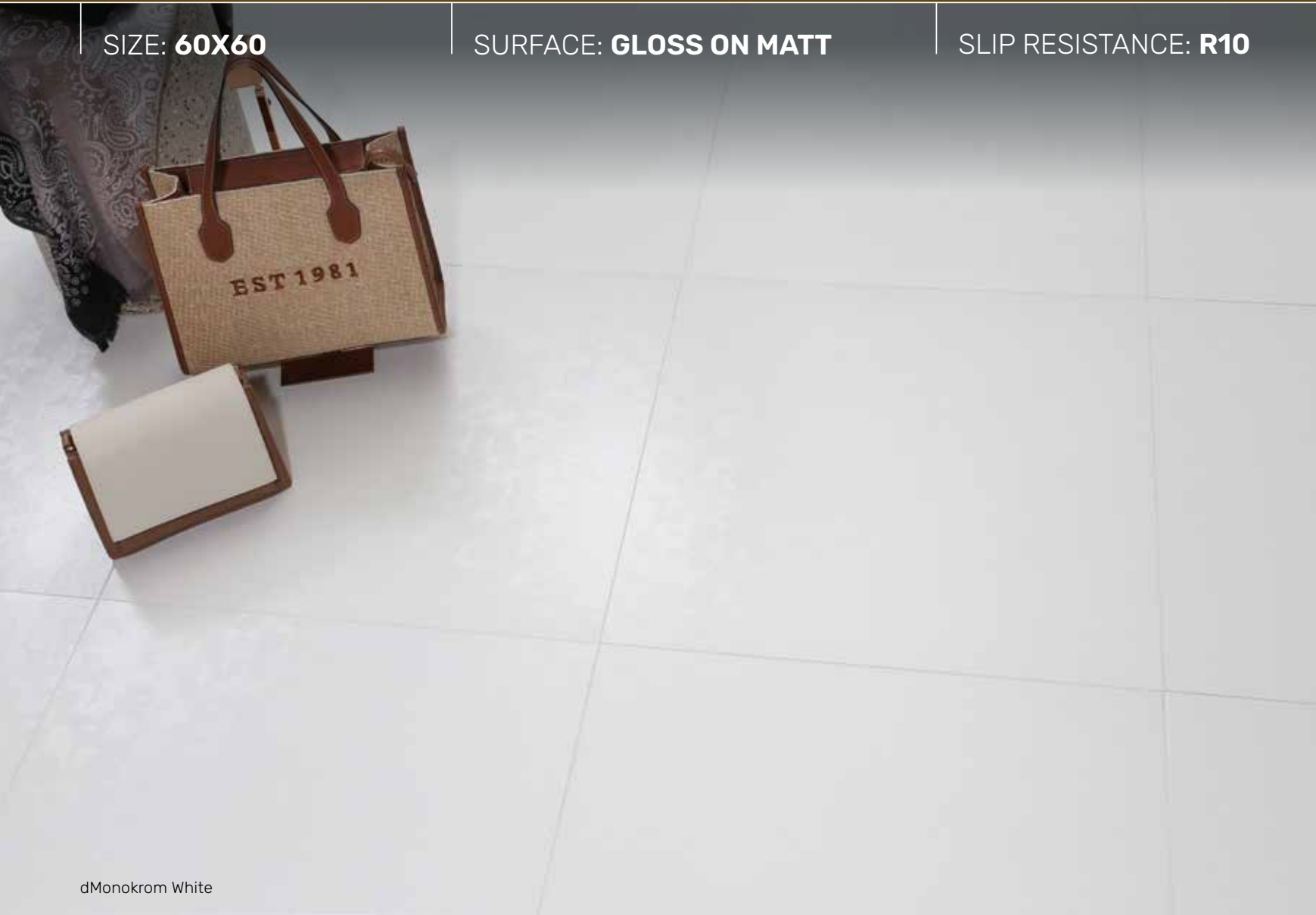
Moderate random design (6)



SIZE: **60X60**

SURFACE: **GLOSS ON MATT**

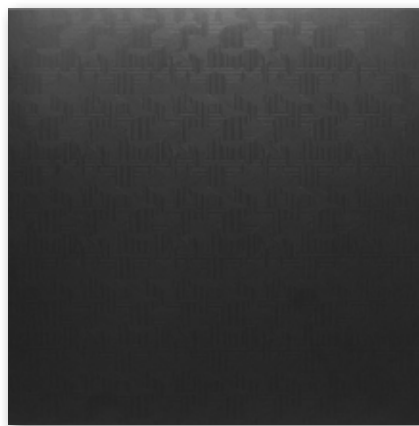
SLIP RESISTANCE: **R10**



dMonokrom White



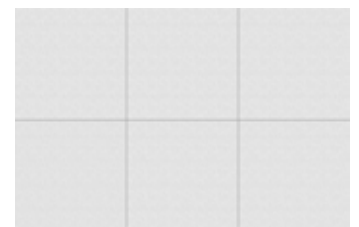
GT602732R  
dMonokrom White



GT602733R  
dMonokrom Black



V1



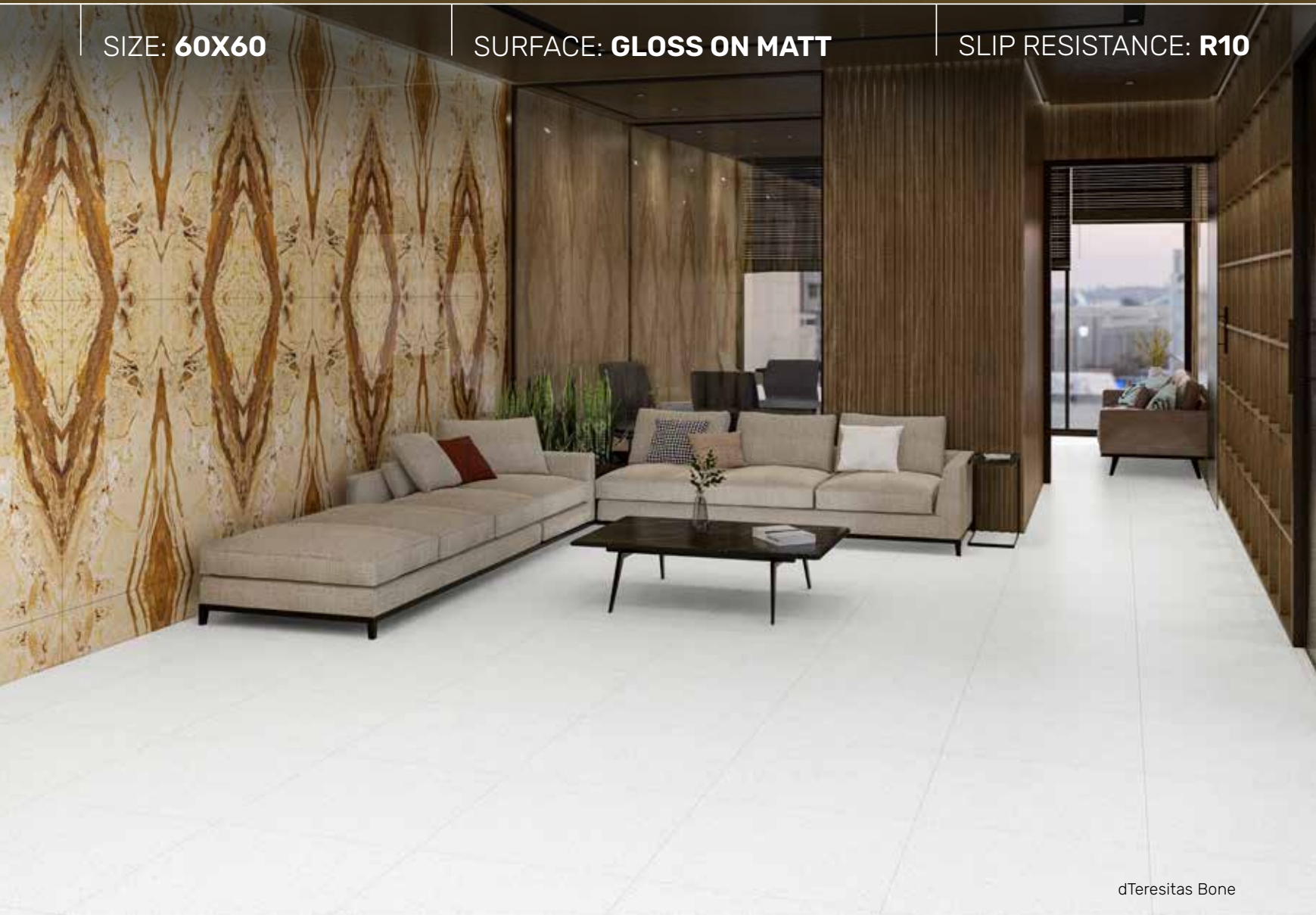
Non random design



SIZE: **60X60**

SURFACE: **GLOSS ON MATT**

SLIP RESISTANCE: **R10**



dTeresitas Bone

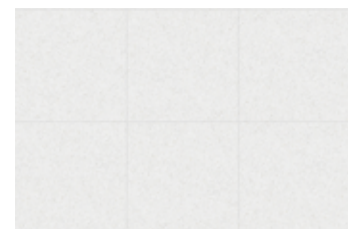


GT603535R  
dTeresitas Bone



GT603536R  
dTeresitas Taupe

 V2



Mild random design (6)

SIZE: **60X60**

SURFACE: **MATT**

SLIP RESISTANCE: **R10**



dHobart White



GT602122R  
dHobart White

 **V2**



Mild random design (3)

SIZE: **60X60**

SURFACE: **MATT**

SLIP RESISTANCE: **R10**



dAugusta Mocca



GT602130CR  
dAugusta Bone



GT602131CR  
dAugusta Cream



GT602133CR  
dAugusta Grey

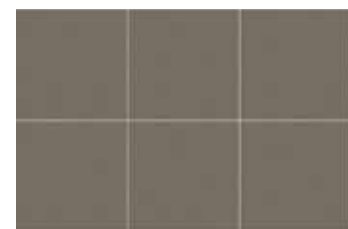


GT602132CR  
dAugusta Mocca



GT602134CR  
dAugusta Black

 V1



Non random design

SIZE: **60X60**

SURFACE: **MATT**

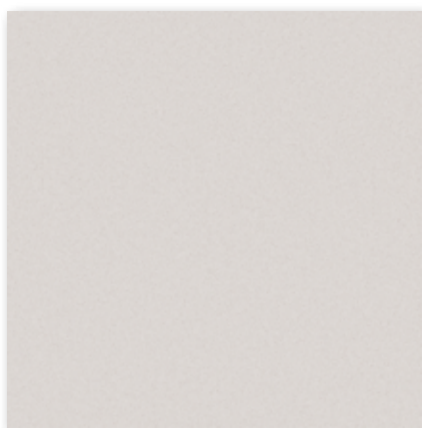
SLIP RESISTANCE: **R10**



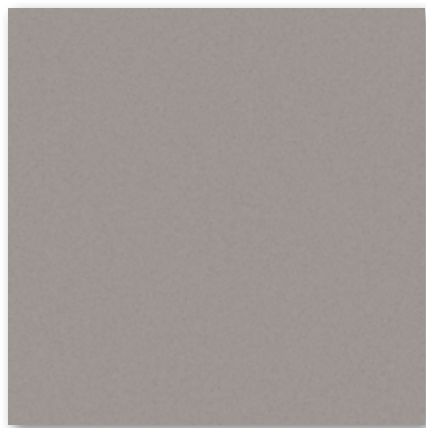
dArlington Grey



GT602151R  
dArlington Bone

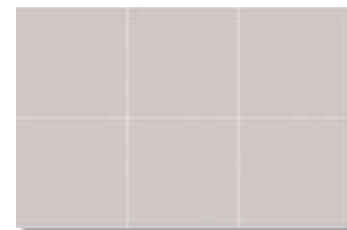


GT602152R  
dArlington Grey



GT602153R  
dArlington Taupe

 V1

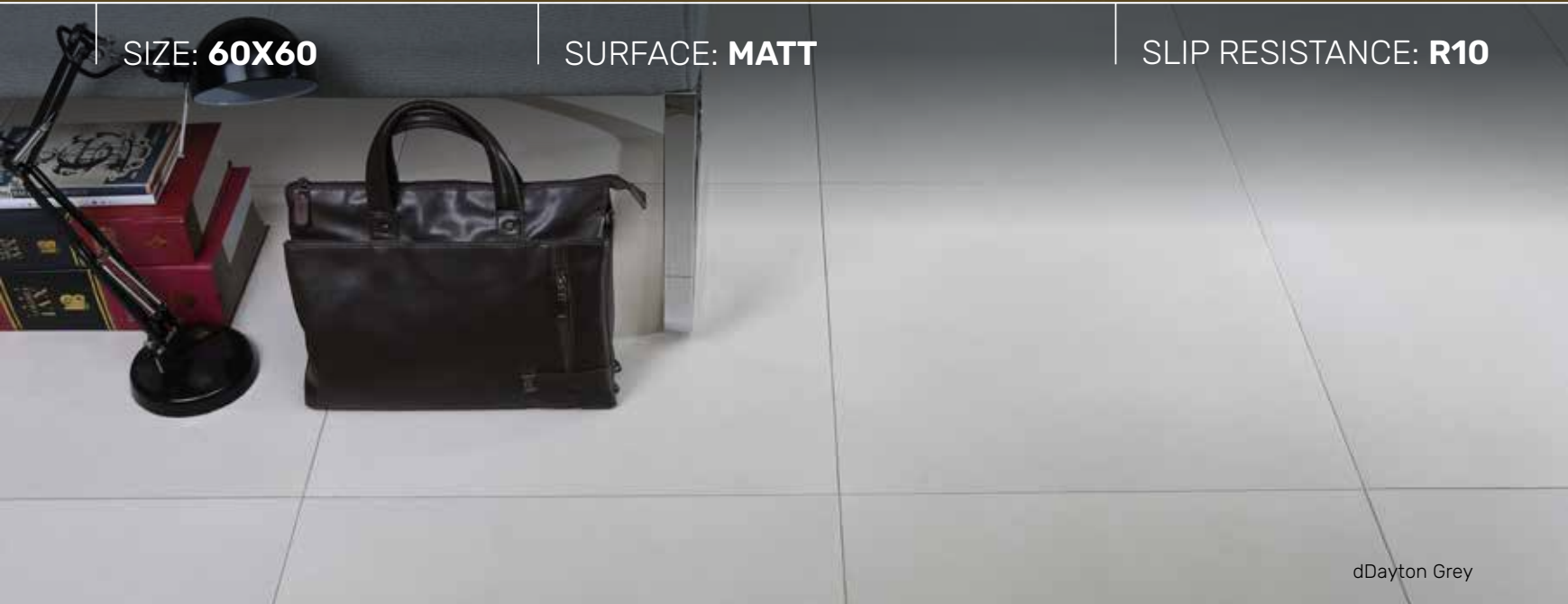


Non random design

SIZE: **60X60**

SURFACE: **MATT**

SLIP RESISTANCE: **R10**



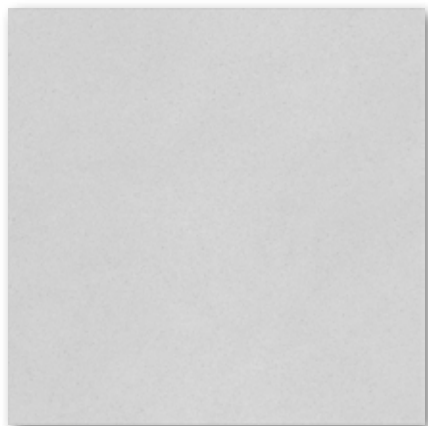
dDayton Grey



GT602135R  
dDayton Bone



GT602136R  
dDayton Beige



GT602137R  
dDayton Grey



GT602138R  
dDayton Charcoal

 V1



Non random design

SIZE: **60X60**

SURFACE: **MATT**

SLIP RESISTANCE: **R10**



dPozlana Dark

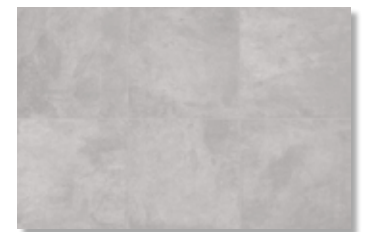


GT602517R  
dPozlana Light



GT602518R  
dPozlana Dark

 V2

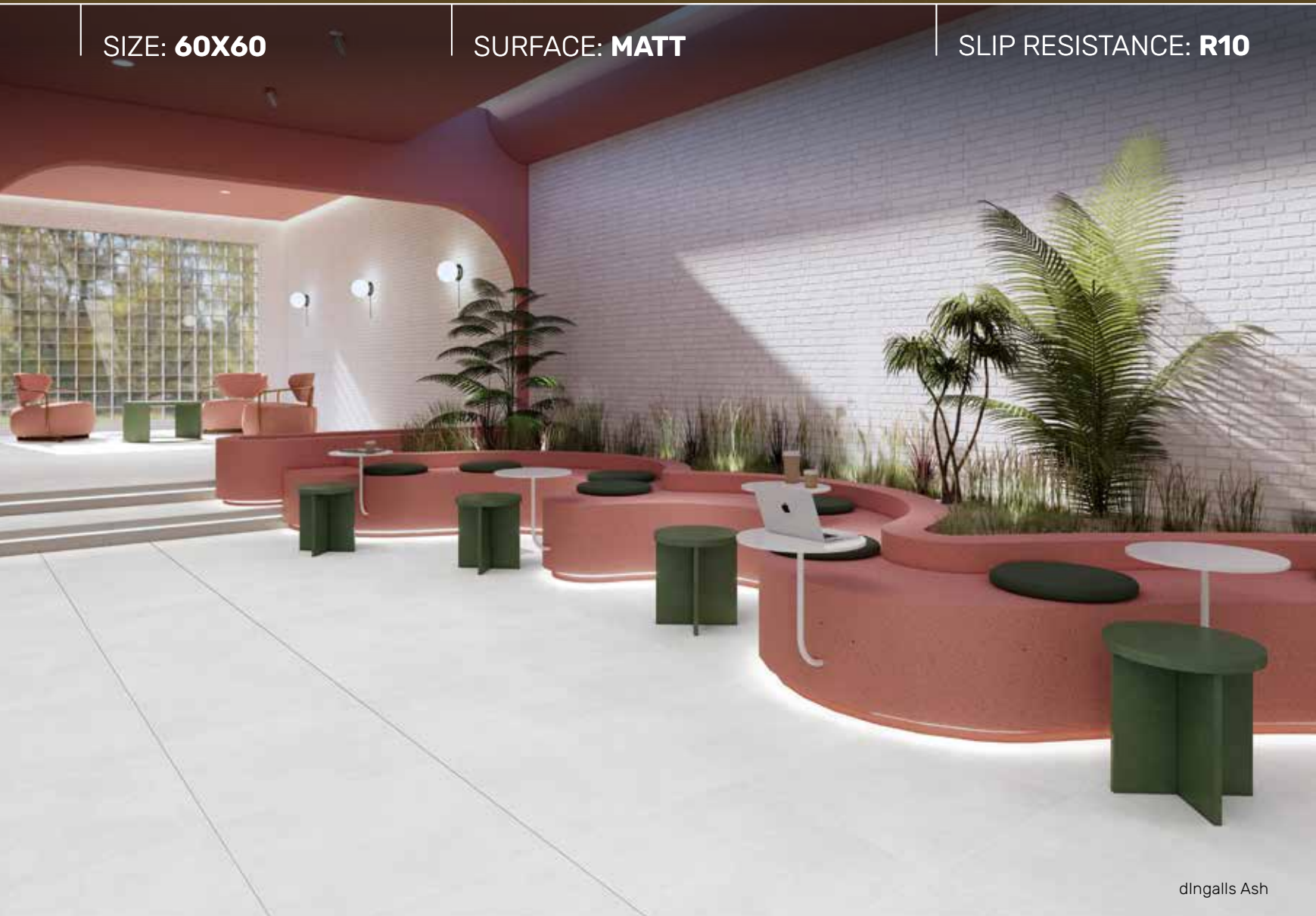


Mild random design (6)

SIZE: **60X60**

SURFACE: **MATT**

SLIP RESISTANCE: **R10**



dIngalls Ash



GT602553R  
dIngalls Ash



GT602554R  
dIngalls Smoke

V2

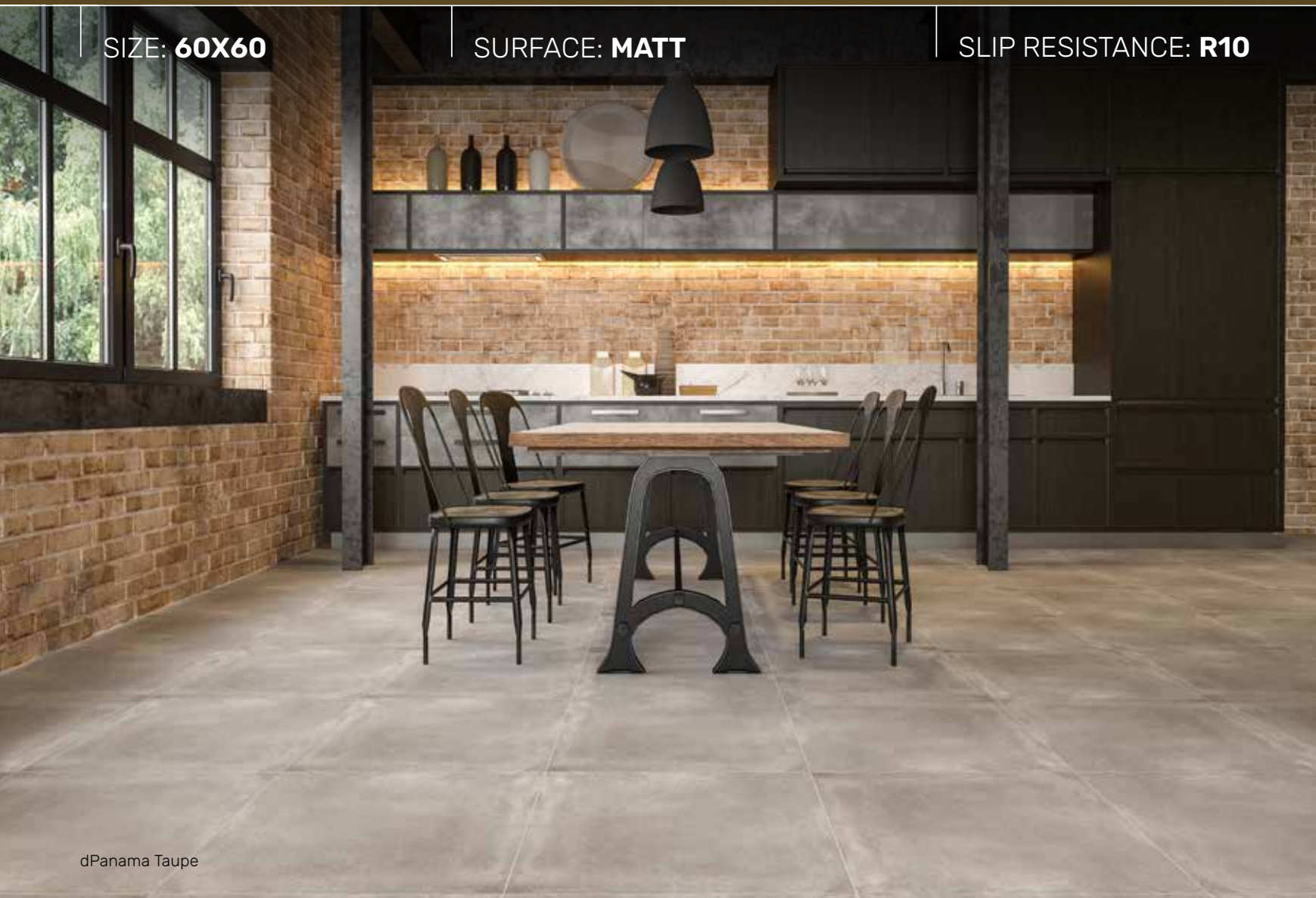


Mild random design (8)

SIZE: **60X60**

SURFACE: **MATT**

SLIP RESISTANCE: **R10**



dPanama Taupe



GT602175R  
dPanama Perla



GT602176R  
dPanama Taupe

 V2



Mild random design (9)

SIZE: **60X60**

SURFACE: **MATT**

SLIP RESISTANCE: **R10**



dBrooklyn Bone



GT602170R  
dBrooklyn Bone



GT602171R  
dBrooklyn Grigio



GT602172R  
dBrooklyn Charcoal

 V2



Mild random design (9)



SIZE: **60X60**

SURFACE: **MATT**

SLIP RESISTANCE: **R10**

dPortland Grey



GT602034R  
dPortland Beige



GT602035R  
dPortland Grey



GT602036R  
dPortland Taupe

 V2



Mild random design



SIZE: **60X60**

SURFACE: **MATT**

SLIP RESISTANCE: **R10**

dPiccadilly Taupe



GT602055R  
dPiccadilly Bone



GT602057R  
dPiccadilly Grey



GT602058R  
dPiccadilly Taupe

 V2

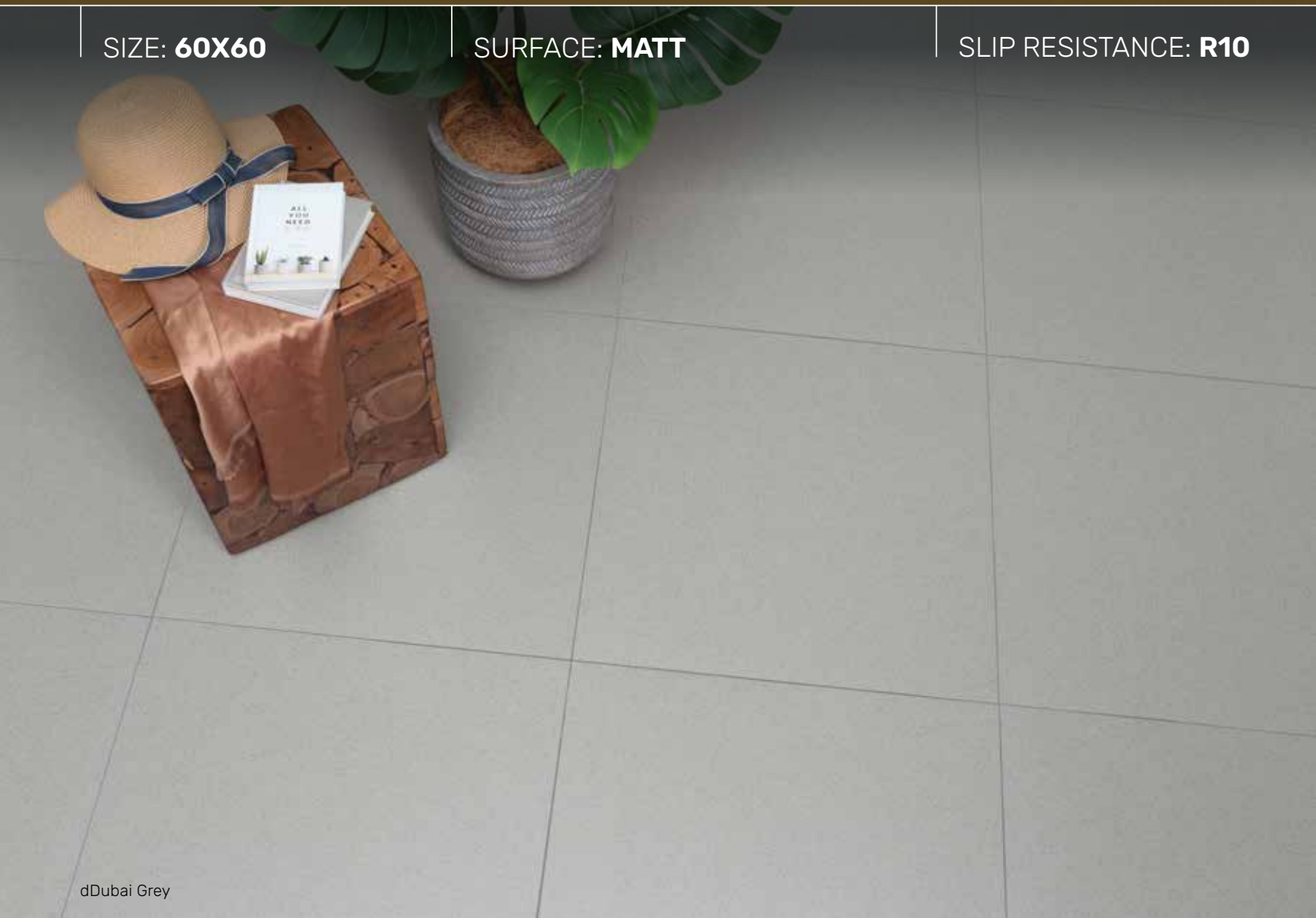


Mild random design (12)

SIZE: **60X60**

SURFACE: **MATT**

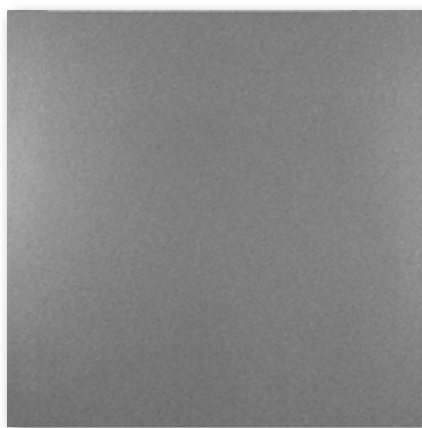
SLIP RESISTANCE: **R10**



dDubai Grey



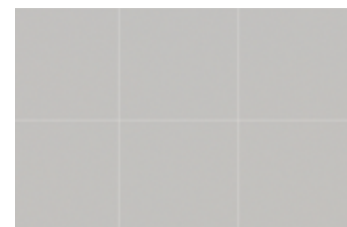
GT603200R  
dDubai Grey



GT603201R  
dDubai Black



V1

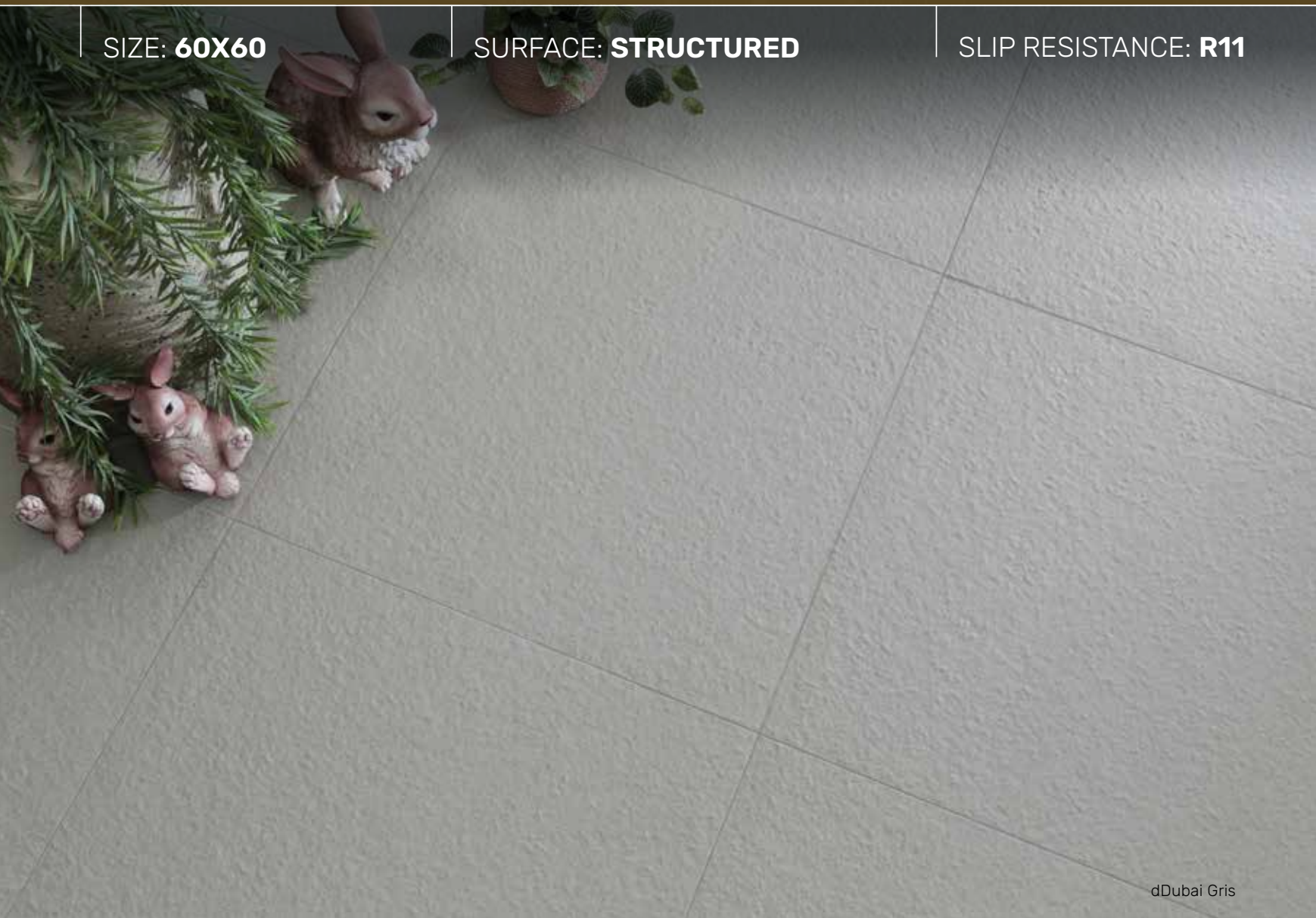


Non random design

SIZE: **60X60**

SURFACE: **STRUCTURED**

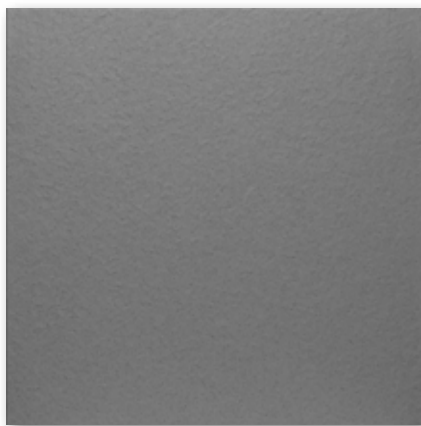
SLIP RESISTANCE: **R11**



dDubai Gris



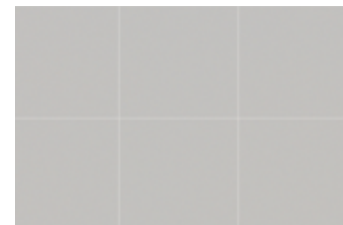
GT605114R  
dDubai Gris



GT605115R  
dDubai Noir



V1



Non random design

# METROPOLITAN

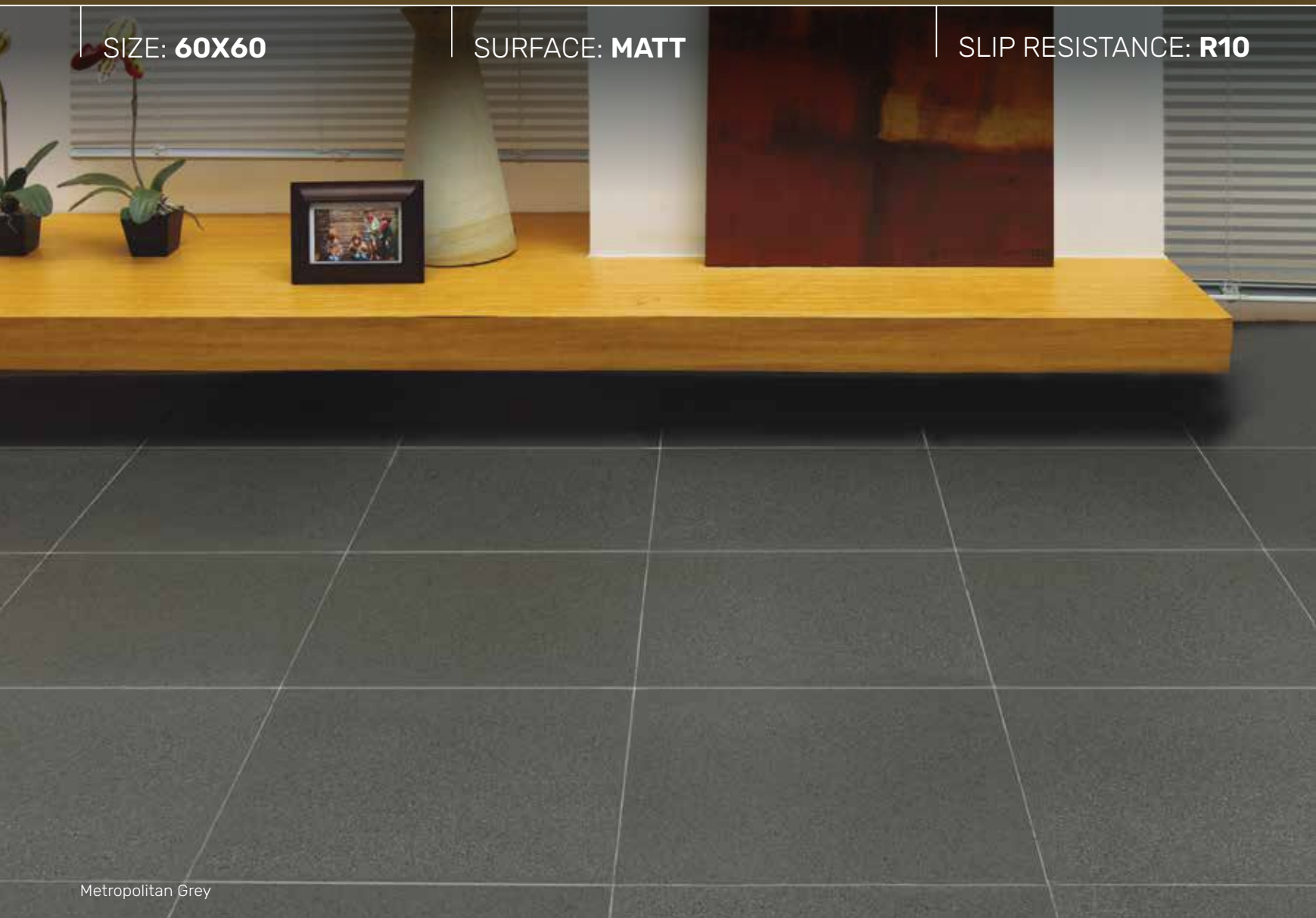
DESIGNMOOD



SIZE: **60X60**

SURFACE: **MATT**

SLIP RESISTANCE: **R10**



Metropolitan Grey

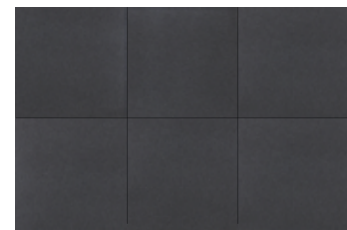


GT602102CR  
Metropolitan Grey



GT602103CR  
Metropolitan Black

 V1



Non random design

# POLARIS

DESIGNMOOD



SIZE: **60X60**

SURFACE: **MATT**

SLIP RESISTANCE: **R10**

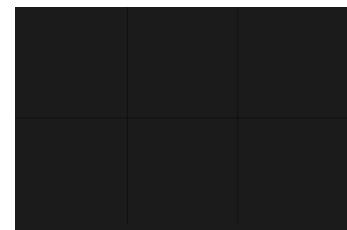


Polaris Nero



GT602413CR  
Polaris Nero

 V1

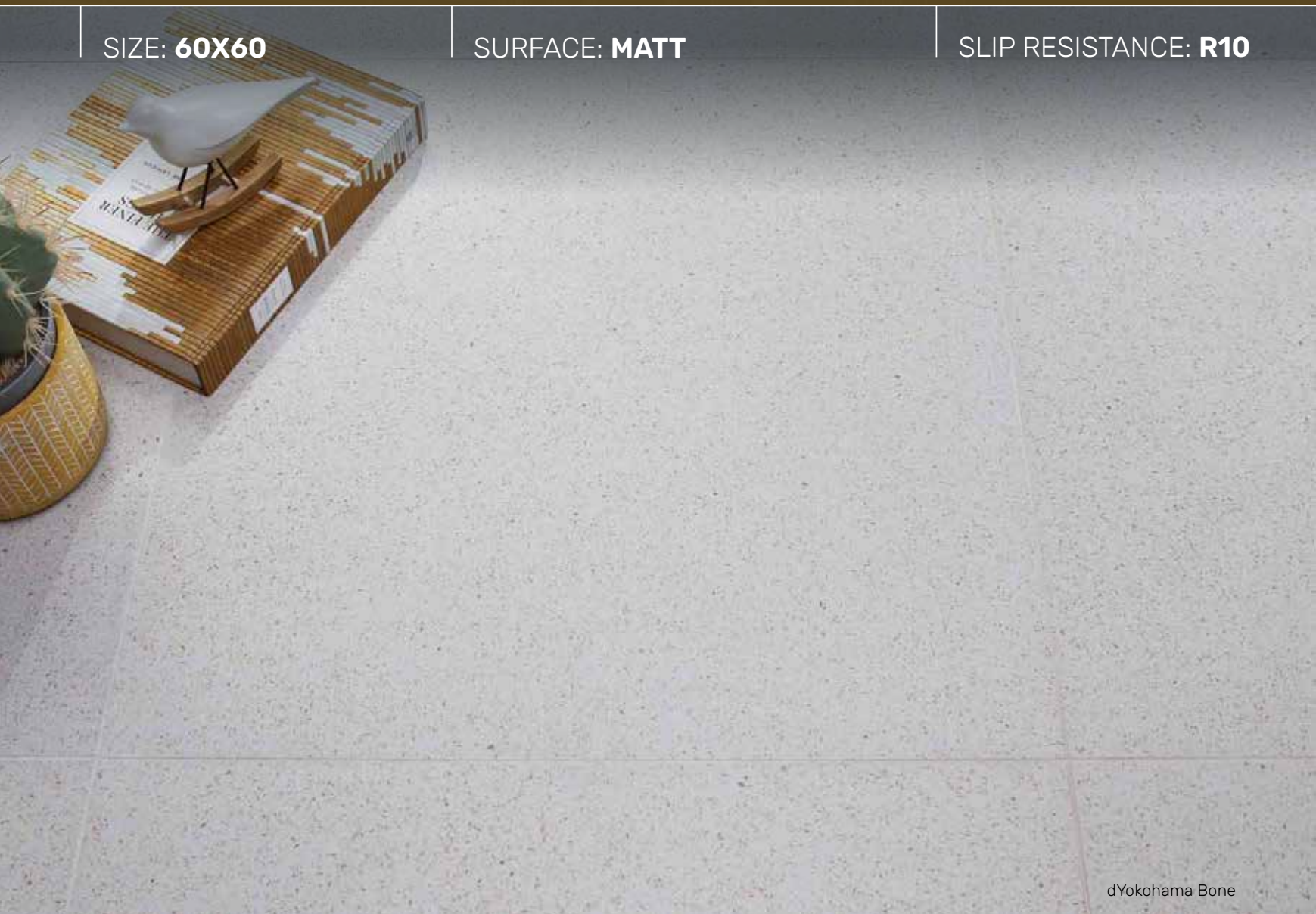


Non random design

SIZE: **60X60**

SURFACE: **MATT**

SLIP RESISTANCE: **R10**



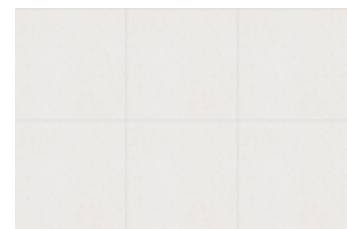
dYokohama Bone



GT602251R  
dYokohama Bone



V1



Non random design

SIZE: **60X60**

SURFACE: **MATT**

SLIP RESISTANCE: **R10**



dTokyo Cream



GT602253R  
dTokyo Cream

 V2

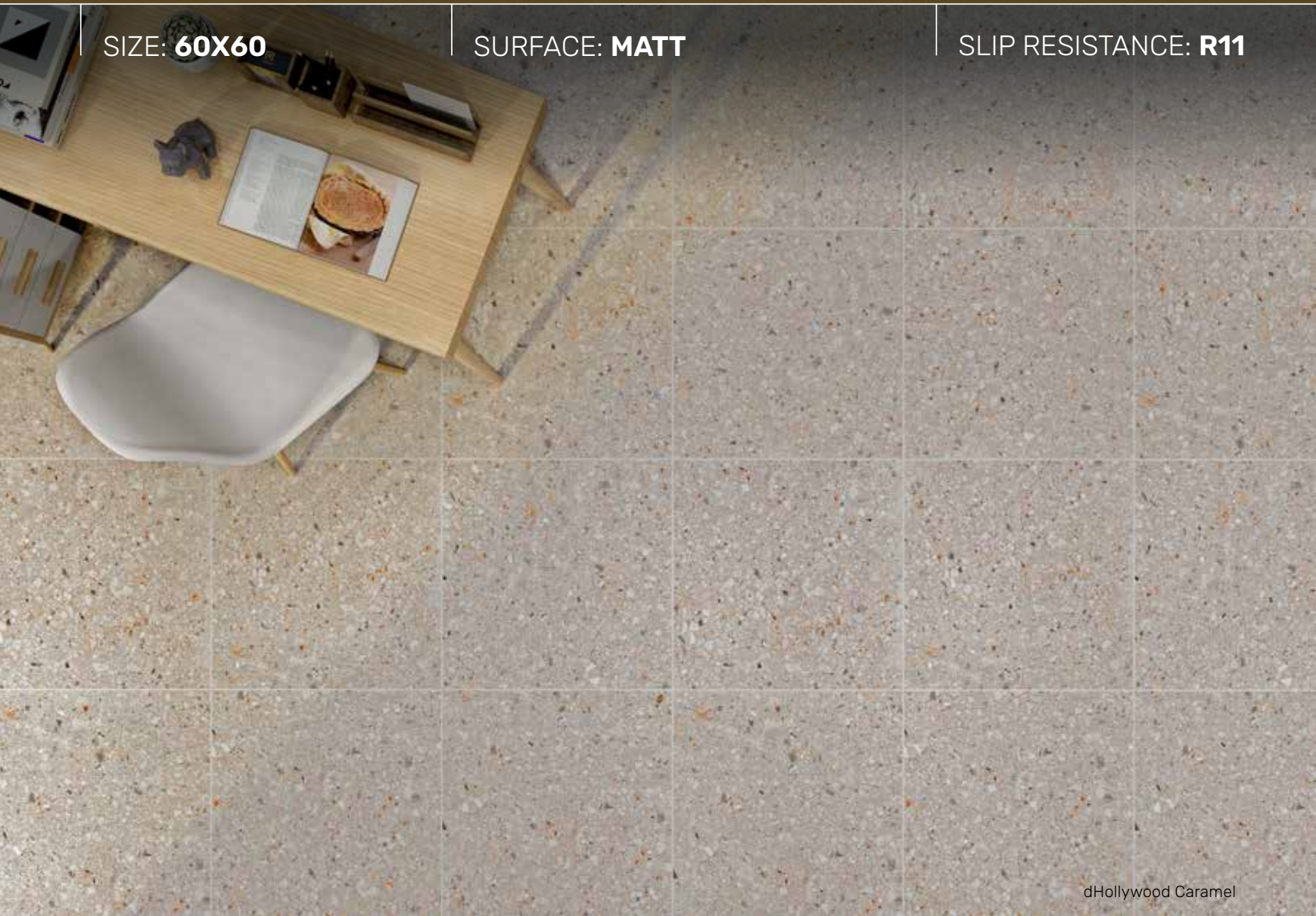


Mild random design

SIZE: **60X60**

SURFACE: **MATT**

SLIP RESISTANCE: **R11**



dHollywood Caramel



GT602417R  
dHollywood Vanilla



GT602418R  
dHollywood Caramel

V2

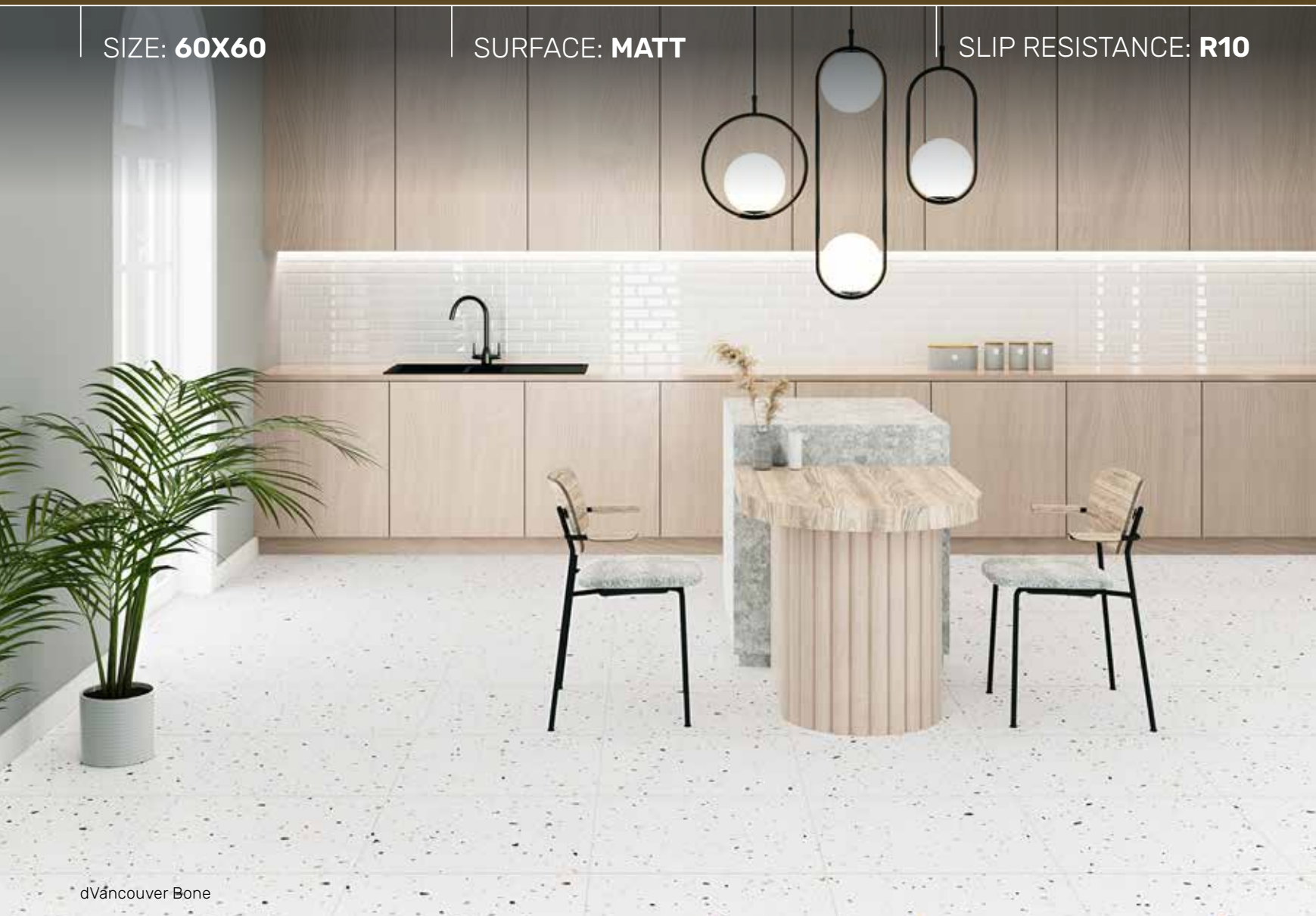


Mild random design (12)

SIZE: **60X60**

SURFACE: **MATT**

SLIP RESISTANCE: **R10**



dVancouver Bone



GT602145R  
dVancouver Bone



GT602146R  
dVancouver Grey

V2

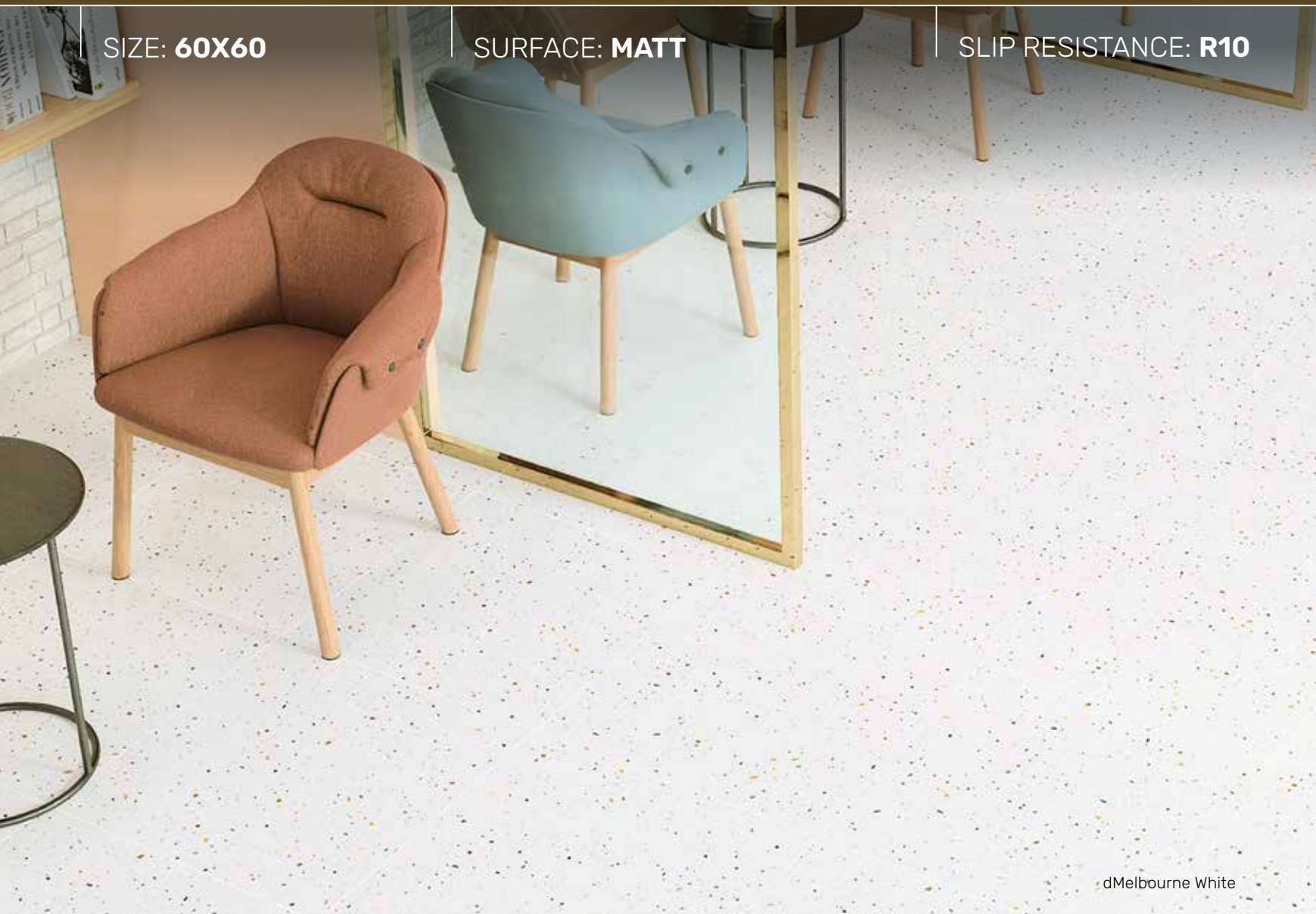


Mild random design (10)

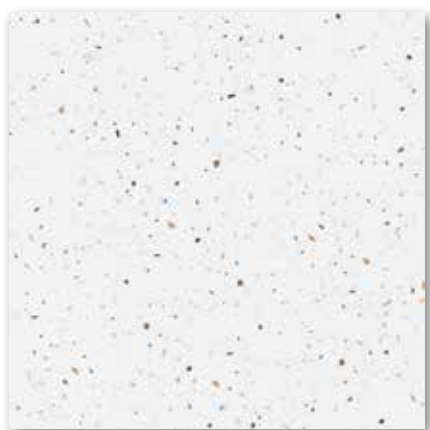
SIZE: **60X60**

SURFACE: **MATT**

SLIP RESISTANCE: **R10**



dMelbourne White



GT602121R  
dMelbourne White

V2

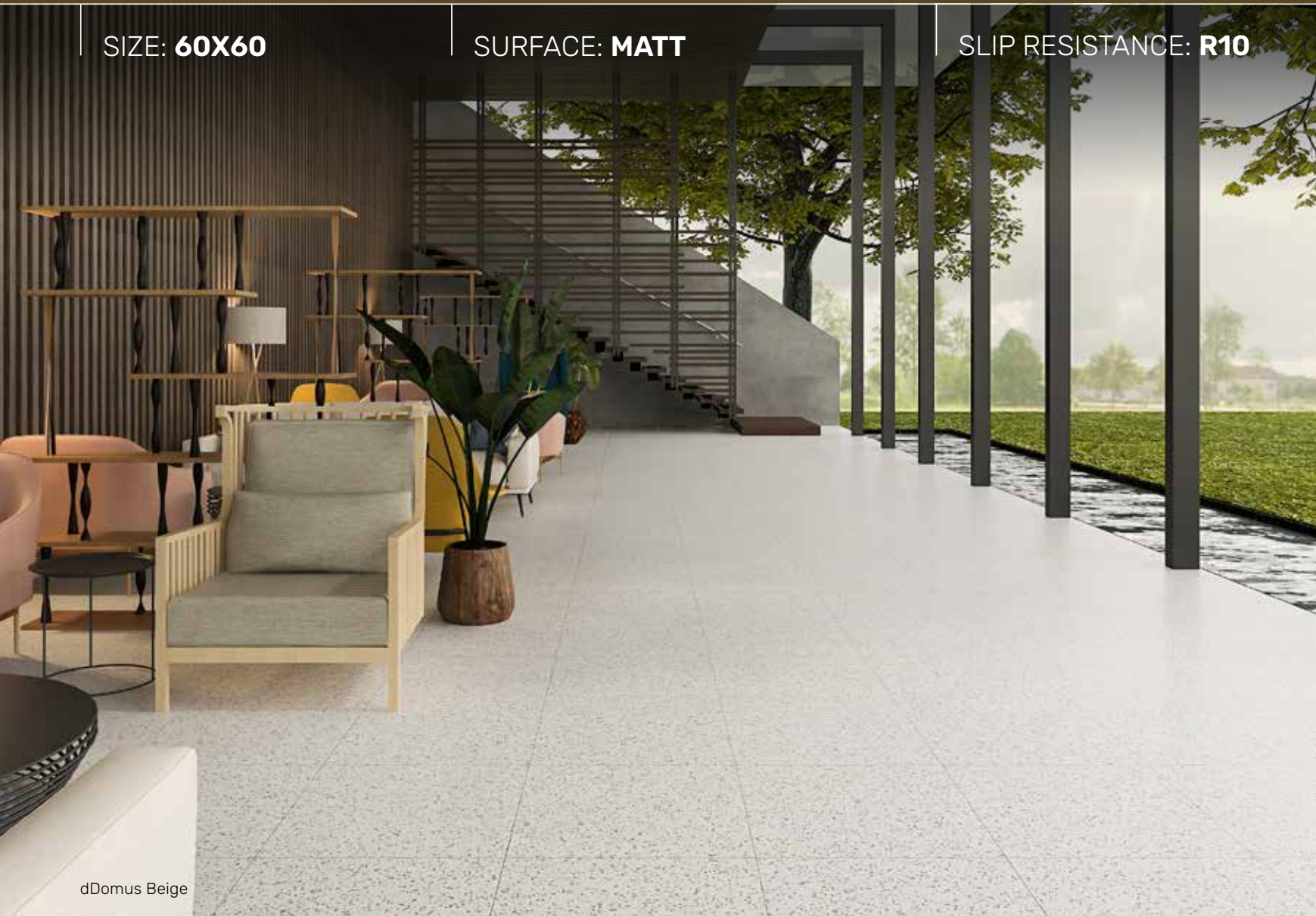


Mild random design (8)

SIZE: **60X60**

SURFACE: **MATT**

SLIP RESISTANCE: **R10**



dDomus Beige



GT602609R  
dDomus Bone



GT602610R  
dDomus Beige

V2

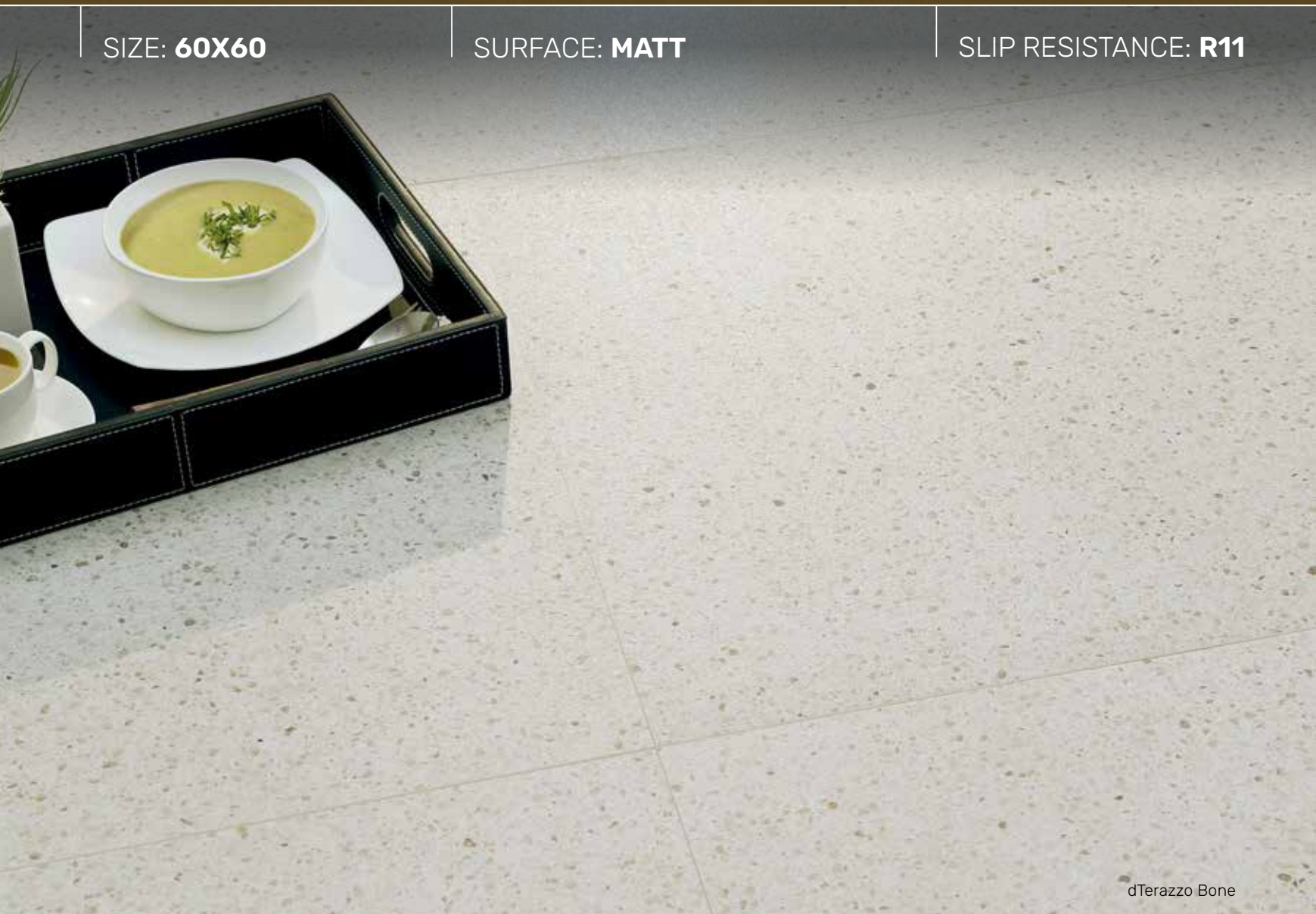


Mild random design (5)

SIZE: **60X60**

SURFACE: **MATT**

SLIP RESISTANCE: **R11**

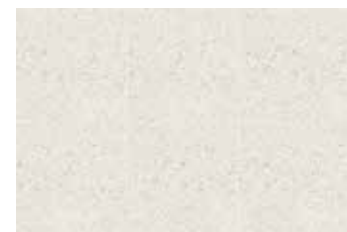


dTerazzo Bone



GT602600R  
dTerazzo Bone

 V2



Mild random design (3)

SIZE: **60X60**

SURFACE: **MATT**

SLIP RESISTANCE: **R10**



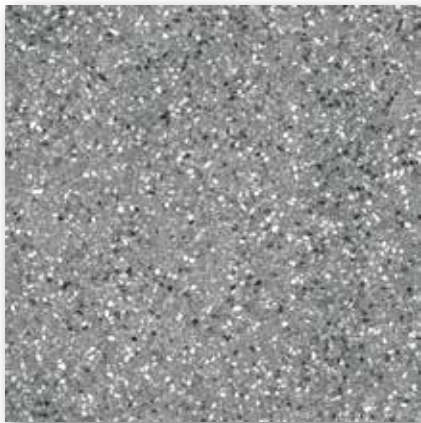
dPortico Bone



GT602197R  
dPortico Bone



GT602199R  
dPortico Mocha



GT602198R  
dPortico Grey

 V2



Mild random design (6)

SIZE: **60X60**

SURFACE: **MATT**

SLIP RESISTANCE: **R12**



dSpezia Charcoal



GT602550R  
dSpezia Perla



GT602551R  
dSpezia Grigio



GT602552R  
dSpezia Charcoal

V2



Mild random design (8)

SIZE: **60X60**

SURFACE: **MATT**

SLIP RESISTANCE: **R10**



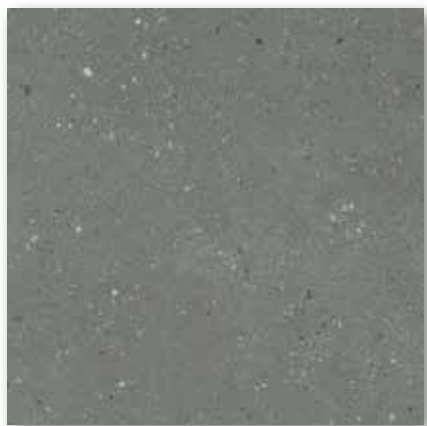
dCasamila Ash



GT603525R  
dCasamila Ash

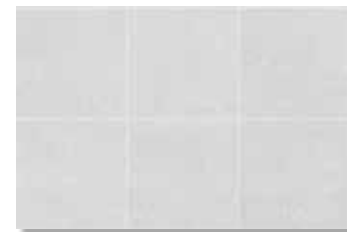


GT603526R  
dCasamila Smoke



GT603527R  
dCasamila Charcoal

 V2



Mild random design (10)

SIZE: **60X60**

SURFACE: **MATT**

SLIP RESISTANCE: **R10**



dVeneti Charcoal



GT603521R  
dVeneti Perla



GT603522R  
dVeneti Grigio



GT603523R  
dVeneti Charcoal

V2



Mild random design (8)

# SIBERIA

DESIGNMOOD



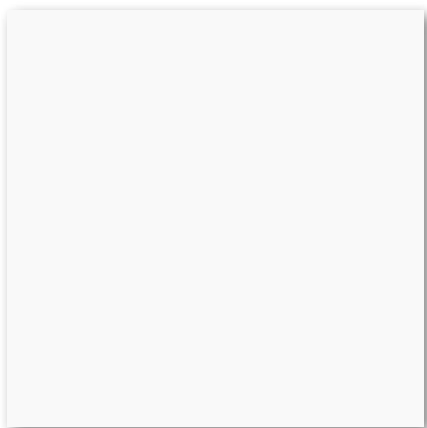
SIZE: **60X60**

SURFACE: **GLOSS ON MATT**

SLIP RESISTANCE: **R10**



Siberia White



GT602201R  
Siberia White

 V1



Non random design

# ALASKA

DESIGNMOOD



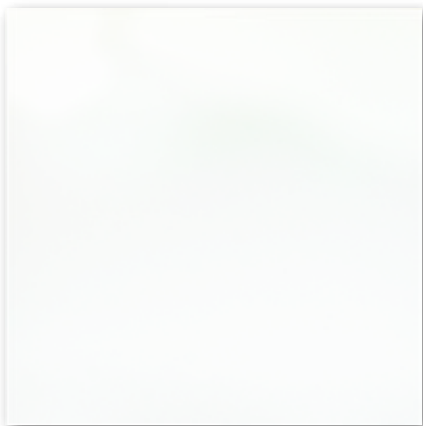
SIZE: **60X60**

SURFACE: **GLOSS ON MATT**

SLIP RESISTANCE: **R10**



Alaska Day

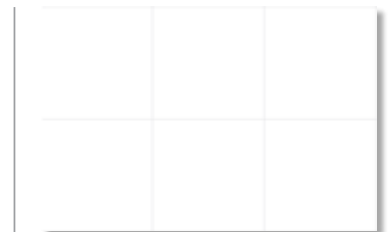


GT602215R  
Alaska Day



GT602216R  
Alaska Night

 V1



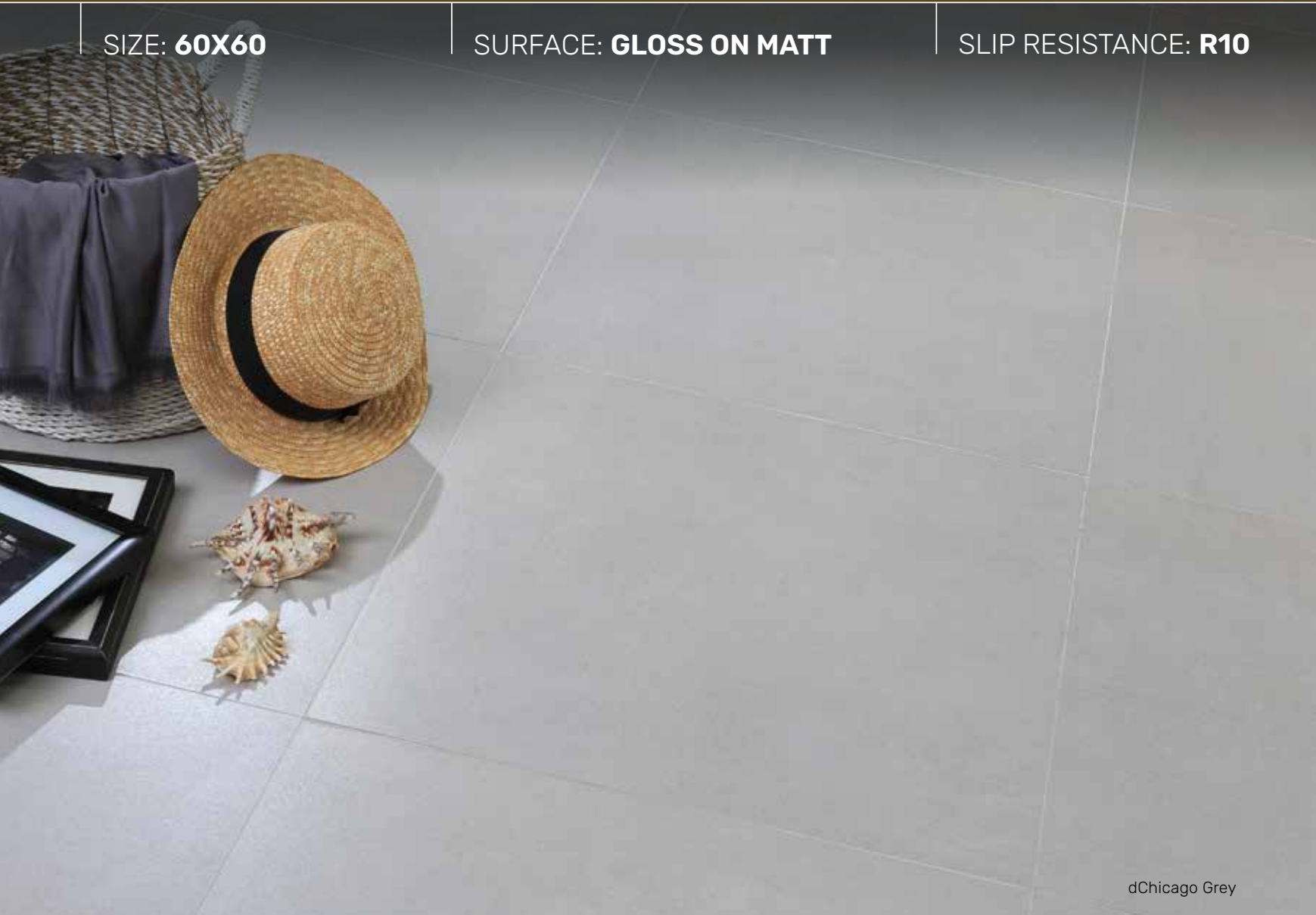
Non random design



SIZE: **60X60**

SURFACE: **GLOSS ON MATT**

SLIP RESISTANCE: **R10**



dChicago Grey



GT602450R  
dChicago Bone



GT602451R  
dChicago Grey

 V2



Mild random design (10)



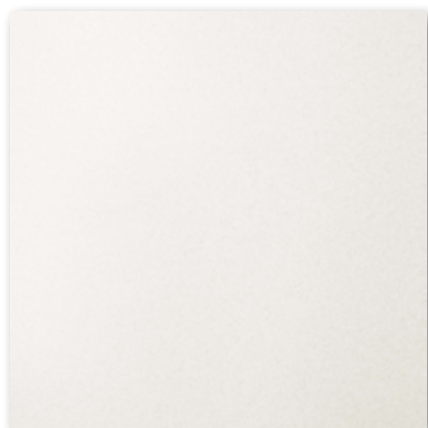
SIZE: **60X60**

SURFACE: **GLOSS ON MATT**

SLIP RESISTANCE: **R10**



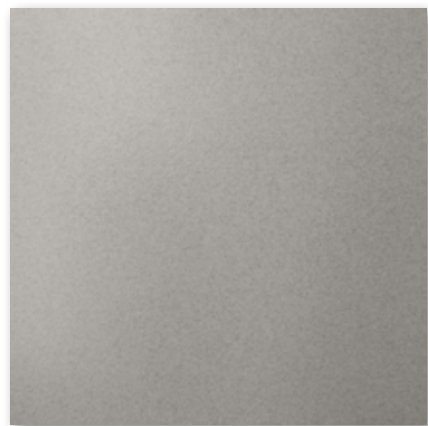
dMarseille Coffee



GT602154R  
dMarseille Bone



GT602155R  
dMarseille Beige

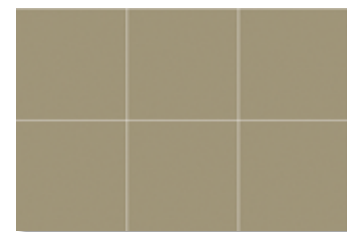


GT602156R  
dMarseille Grey



GT602157R  
dMarseille Coffee

 V1

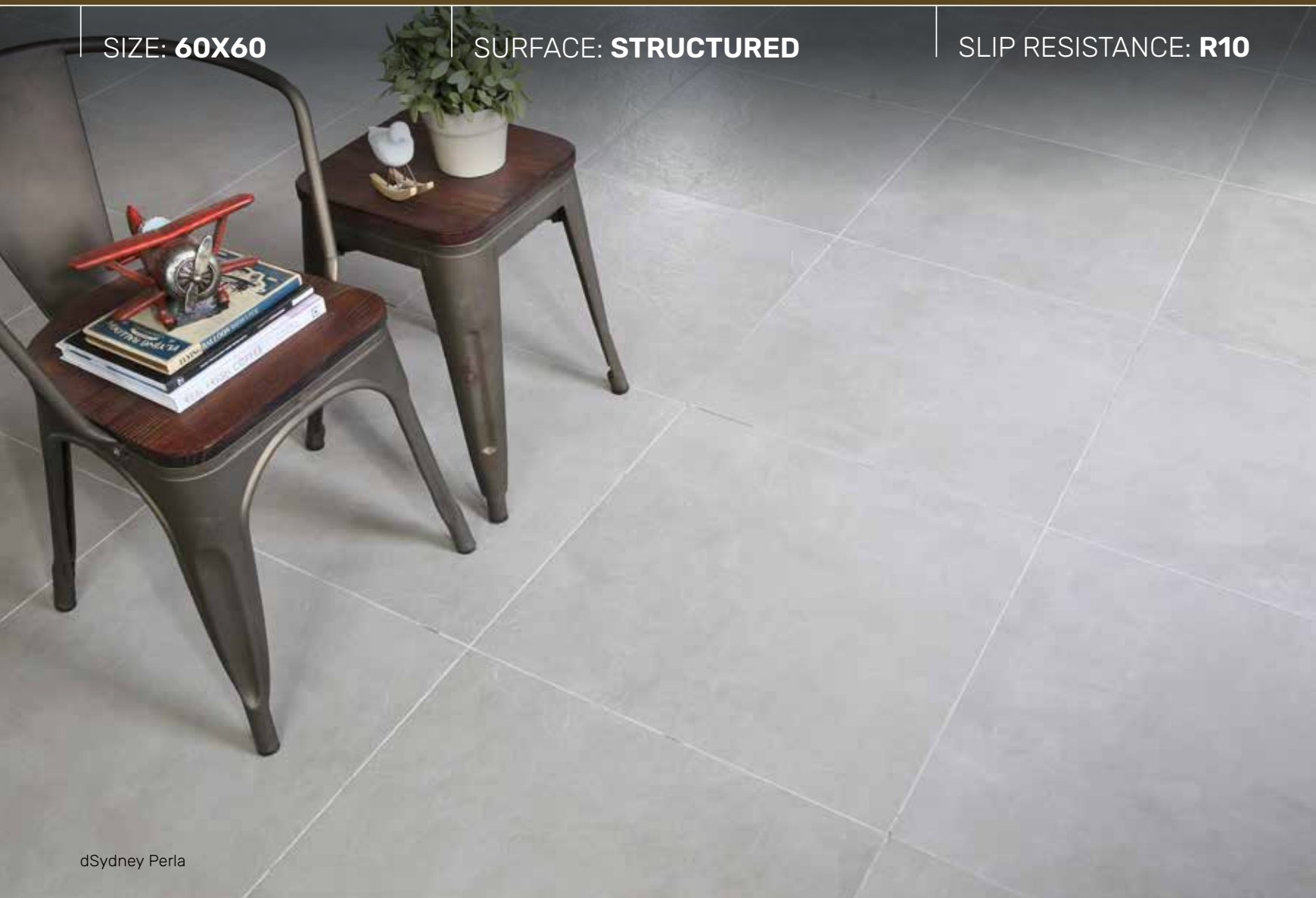


Non random design

SIZE: **60X60**

SURFACE: **STRUCTURED**

SLIP RESISTANCE: **R10**



dSydney Perla

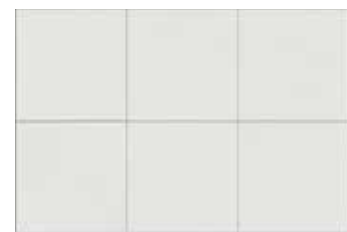


GT605513R  
dSydney Perla



GT605514R  
dSydney Taupe

 V2



Mild random design (11)

SIZE: **60X60**

SURFACE: **STRUCTURED**

SLIP RESISTANCE: **R11**



dAsmant Grigio



GT605526R  
dAsmant Bone



GT605527R  
dAsmant Grigio



GT605528R  
dAsmant Charcoal

 V2

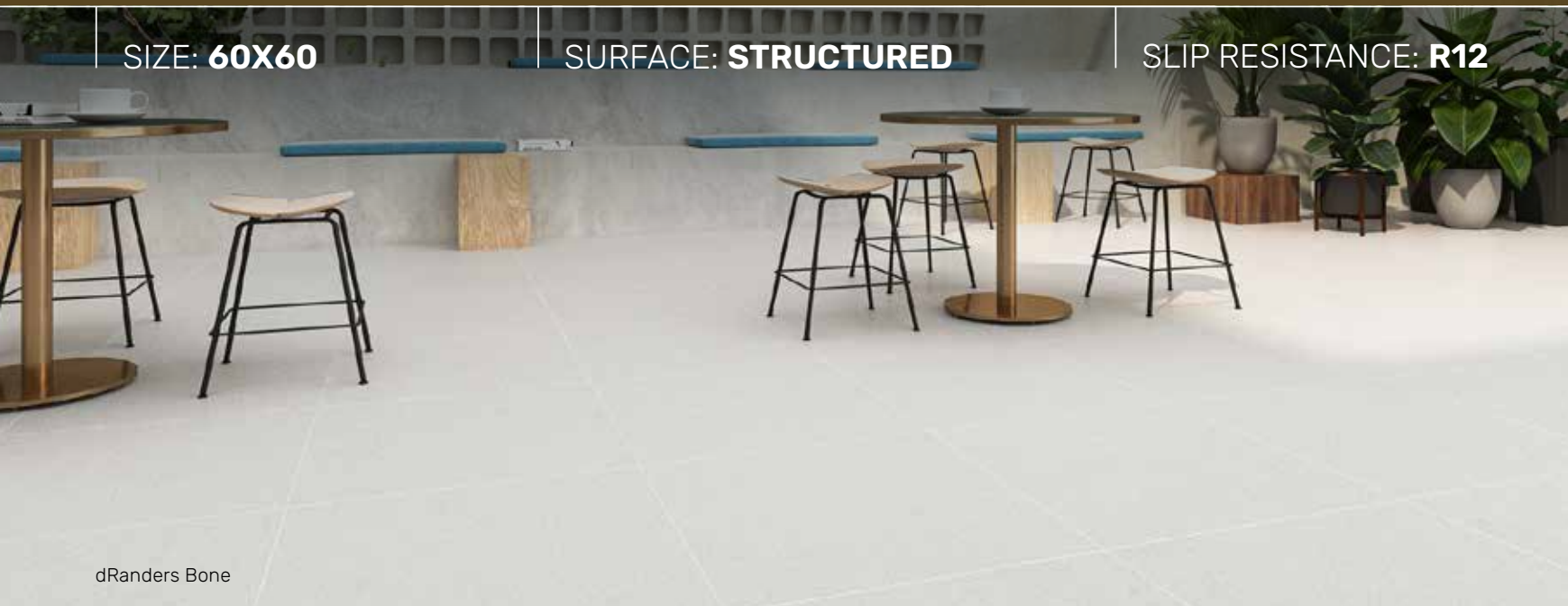


Mild random design (9)

SIZE: **60X60**

SURFACE: **STRUCTURED**

SLIP RESISTANCE: **R12**



dRanders Bone



GT605532R  
dRanders Bone



GT605533R  
dRanders Grey



GT605534R  
dRanders Charcoal

 V2



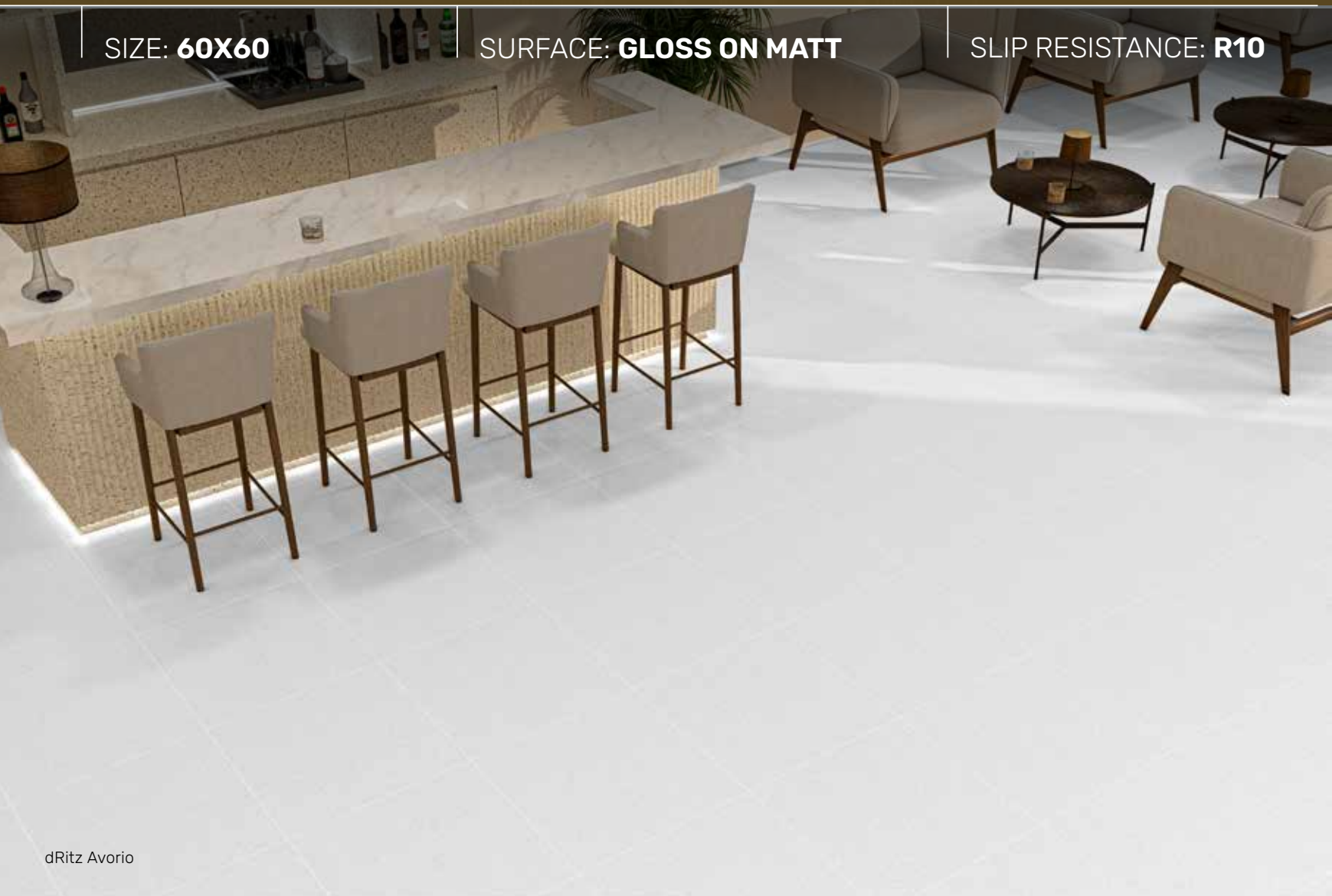
Mild random design (6)



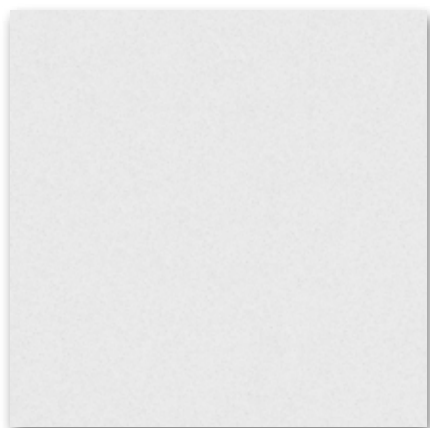
SIZE: **60X60**

SURFACE: **GLOSS ON MATT**

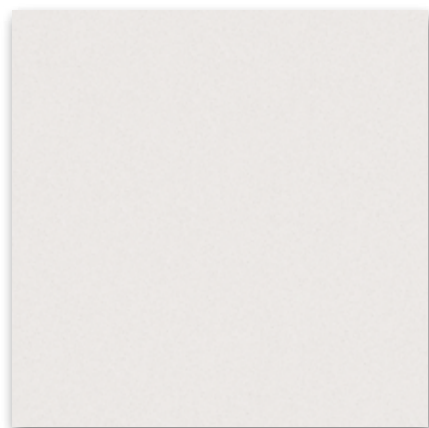
SLIP RESISTANCE: **R10**



dRitz Avorio



GT602456R  
dRitz Avorio

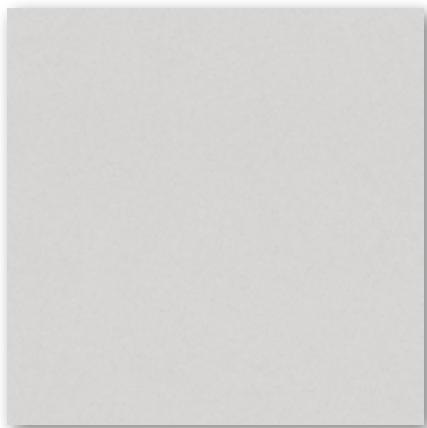


GT602457R  
dRitz Crema

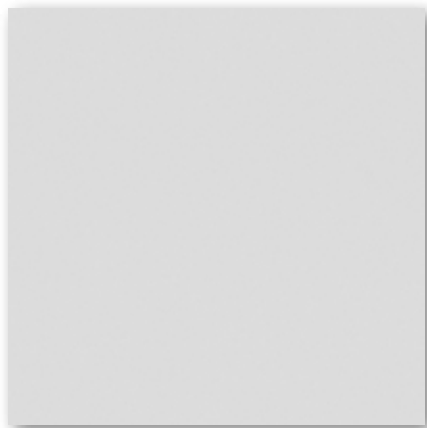
 V1



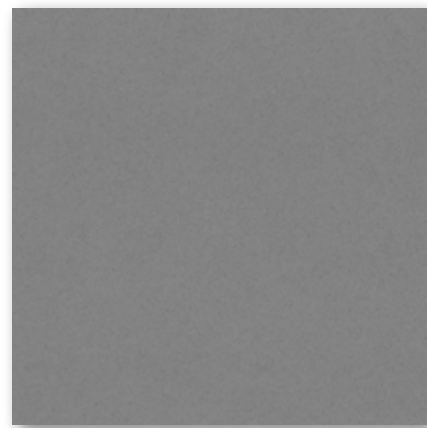
Non random design



GT602427R  
dMaine Perla



GT602425R  
dMaine Avorio



GT602428R  
dMaine Grigio



GT332406R  
dMaine Bone



GT332407R  
dMaine Beige



GT332408R  
dMaine Pearl



GT332409R  
dMaine Grey



Non random design

# Urban essence

SIZE: **60X60**  
**30X30**

SURFACE: **MATT**

SLIP RESISTANCE: **R11**



# 2025 INDEX

## 60x60

Alaska	36
dArlington	12
dAsmant	40
dAugusta	11
dBrooklyn	17
dChicago	37
dCasamila	33
dDayton	13
dDubai (Matt)	20
dDubai (Structured)	21
dDomus	29
dGrid	6
dHobart	10
dHollywood	26
dIngalls	15
dMaine	43
dMarseille	38
dMelbourne	28
dMonokrom	8
dPanama	16
dPiccadilly	19

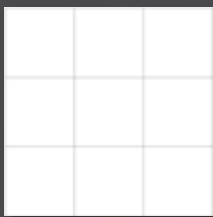
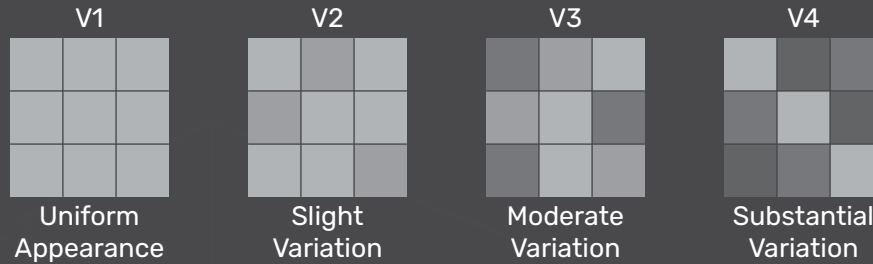
dPortico	31
dPortland	18
dPozlana	14
dRanders	41
dRitz	42
dSpezia	32
dSydney	39
dTejer	7
dTerazzo	30
dTeresitas	9
dTokyo	25
dVancouver	27
dVeneti	34
dYokohama	24
Metropolitan (Matt)	22
Polaris	23
Siberia	35

## 30x30

dMaine	43
--------	----

# SHADE VARIATIONS

Shade variations are the characteristic of the tile that deliberate and visible differences in graphics and colour hue. Digital Tecnica technology creates stunning porcelain tiles with hyper-realistic surface tones, markings and textures which mimic a range of natural materials including; stone, timber, terracotta, cement, mosaic, marble and more.



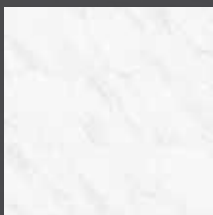
**V1 (Uniform Appearance)**  
Differences among pieces from the same production run are minimal.

Olvera Bright  
60x60



**V3 (Moderate Variation)**  
Amount and intensity of colors on each piece may vary significantly.

dRajasthan Sand  
30x30



**V2 (Slight Variation)**  
Clearly distinguishable differences in texture and/or pattern within similar colors.

dSalvadori White  
60x60



**V4 (Substantial Variation)**  
Random color differences each tile, so that one tile may have totally different colors from other tiles.

dDutch Blue  
60x60

# R-RATING SLIP RESISTANT

Floor tiles these days are given an anti slip rating. This rating comes in the form of an 'R' value (Ramp test) with a scale from R9 to R13 (R9 having the least slip resistance and R13 the highest slip resistance).

CLASSIFICATION	R9	R10	R11	R12	R13
SLIP ANGLE	6-9 DEGREE	10-18 DEGREE	19-26 DEGREE	27-34 DEGREE	>35 DEGREE
WET SLIP RISK	HIGH RISK	MODERATE	MODERATE	LOW RISK	LOW RISK
AREA OF USE	DRY AREA	OCCASIONAL WETNESS	OUTDOOR ENVIROMENT	WET/OUTDOOR ENVIROMENT	VERY WET COMMERCIAL AREA

- **R9** : For internal dry area usage.
- **R10** : For internal area with occasional spill or wetness (need constant cleaning/drying) : kitchens and bathrooms.
- **R11** : For internal usage with constant spill or wetness (require continous cleaning and drying effort).
- **R12** : For external usage (works in dry and wet situation with cautions).
- **R13** : For external usage with other contaminant (such as oil).

# TECHNICAL SPECIFICATION

TECHNICAL CHARACTERISTIC	TEST METHOD OR AS PER NORM	ISO 13006 REQUIREMENT	ROMANGRANIT
Length and Width	ISO 10545-2	± 0.6%	± 0.10%
Side Straightness	ISO 10545-2	± 0.5%	± 0.10%
Rectangularity	ISO 10545-2	± 0.6%	± 0.10%
Centre & Edge Curvature	ISO 10545-2	± 0.5%	- 0.15% to + 0.25%
Warpage	ISO 10545-2	± 0.5%	± 0.25%
Thickness	ISO 10545-2	± 5.0%	± 4.0%
Water Absorption	ISO 10545-3	Group B1a ≤ 0.5%	< 0.25%
Modulus of Rupture	ISO 10545-4	Group B1a 35 Ind. Min. 32 N/mm <sup>2</sup>	≥ 40 N/mm <sup>2</sup>
Crazing Resistance	ISO 10545-11	Required	Resistant
Chemical Resistance	ISO 10545-13	Minimum Class GB	Minimum Class GB
Stain Resistance	ISO 10545-14	Minimum Class III	Minimum Class IV
Abrasion Resistance	ISO 10545-7	Group I to V	Group III to V

- The governing sizes and weights are subject to usual variations expected of fired ceramic productions.
- Slight variations of shades/colours and surface finishes are inherent due to the nature of ceramic tile production process.

# STANDARD PACKING DATA

FACTORY	TYPE	SIZE	PIECES/BOX	APPROX. SQM/BOX	APPROX. WEIGHT KG/BOX	BOXES/PALLET	PALLET/CONTAINER	APPROX. WEIGHT KG/PALLET	APPROX. WEIGHT TONNE/CONT.	APPROX. SQM/CONT.	APPROX. BOX/CONT.
SRKI / RCI	Rectified	60x60	3	1.08	21.5	40	27	885	23.9	1166	1080
SRKI	Rectified	30x30	12	1.08	21.5	50	21	1100	23.1	1134	1050

- Packing information may vary depending on spesification of each motif and size.
- The colors illustrated in this brocure are produces near to actual colors.

**Office**

**PT. SATYA LANGGENG SENTOSA**

marketing@romanceramics.com

**Export Inquiry**

export@romanceramics.com

**House of Roman**

Quadra Centrum

Jl. Taman Aries Blok E1.3 Meruya, Jakarta

Phone : (021) 2568 4730

Jl. RS. Fatmawati No. 6A, Jakarta

Phone : (021) 7591 4925

Pusat Bahan Bangunan dan Interior

Jl. Mangga Dua Raya Blok F2 No.1, Jakarta

Phone : (021) 601 1537

Jl. Boulevard Barat Raya

Ruko LC No. 16-18, Kelapa Gading, Jakarta

Phone : (021) 453 3315

Jl. Boulevard Raya, Graha Emerald M05/08 No.1

Gading Serpong, Tangerang

Phone : (021) 5999 3550

Jl. Veteran No. 24, Bandung

Phone : (022) 2051 3148

Bumi Indraprasta, Home & Living Center

Jl. Panyawangan Kav.6 - B No. 6

Kota Baru Parahyangan, Bandung Barat

Phone : (022) 8779 3262

Jl. Dr. Cipto No. 163, Semarang

Phone : (024) 7653 0559

Jl. Raya Magelang No.168, Kutu Asem - Sinduadi,

Mlati - Sleman, Yogyakarta

Phone : (0274) 501 4280

Jl. Mayjen Sungkono No. 46, Surabaya

Phone : (031) 566 9780

Jl. Prof. H.M. Yamin SH No. 34, Medan

Phone : (061) 456 1562

Jl. Cokroaminoto No. 160, Ubung, Denpasar

Phone : (0361) 909 3478

[www.roman.co.id](http://www.roman.co.id)

[@roman.co.id](https://www.instagram.com/roman.co.id)

[You and ROMAN](https://www.youtube.com/channel/UC...)

March 2025



Visit our website

